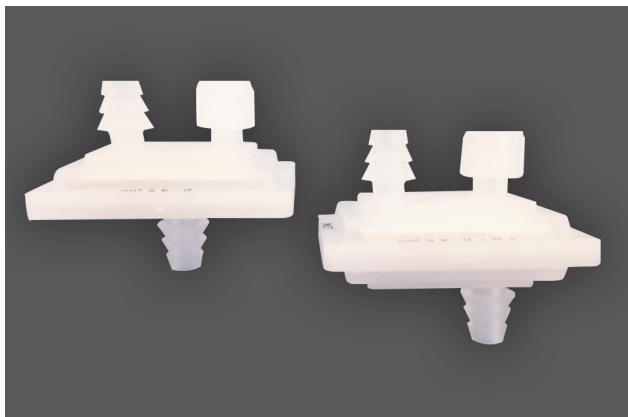


FACT SHEET

aspire® Capsule-Clear 25DM

25 mm Cellulose Depth Media Filter Capsules



Description

Capsule-Clear 25DM Cellulose Depth Media capsules are available in multiple filtration pore sizes, dual and single layer. This design provides for simple, quick, and efficient filtration of fluids used in laboratory, pilot, and small scale applications. The compact design of the capsule reduces hold-up volume and minimizes exposure to hazardous chemicals. No adhesives, binders, or surfactants are used in the manufacturing process. The unit is thermally sealed to insure integrity.

Compliance

	Class VI	FDA Listed Per 21 CR
Media	Pass	Yes
Capsule Body	Pass	Yes

Operating Conditions

Maximum Working Pressure:

80 PSID @ 72 °F

Minimum Burst Pressure:

120 PSID @ 72 °F

Maximum Forward Differential Pressure:

60 PSID @ 72 °F

30 PSID @ 176 °F

Maximum Reverse Differential Pressure:

30 PSIG @ 72 °F

Maximum Operating Temperature: 172 °F

Sanitization

Capsules can be autoclaved 3 times at 257 °F for 30 minutes or chemically sanitized in situ using common sanitizing agents or hot water at 194 °F for a limited time (dependent on time and temperature). Capsules must not be in situ steam-sterilized.

Materials of Construction

Media	Cellulose Depth Media
Media Supports	Polypropylene
Shell	Polypropylene
Sealing	Compression & Thermally-welded
Effective Filtration Area	0.93 in ² (6 cm ²)
Dimensions	38mm x 48mm
Available Micron Rating	0.15µm to 20µm

Applications

- Blood Products
- Vaccines
- Tissue Culture Preparations
- Preparation of Samples Prior to Instrument Analyses
- Mammalian and Bacterial Cell Separations
- Small Volume Sample Clarification and Evaluation
- Sera
- Samples
- Monoclonal Antibodies

FACT SHEET

aspire® Capsule-Clear 25DM

25 mm Cellulose Depth Media Filter Capsules

Capsule Selection Guide*

Style	Media	Grade	Series	Layers	Inlet	Outlet
E25 Encapsulated 25mm disc	NA = Depth-Clearµm	15 = 0.15 µm 30 = 0.3 µm 45 = 0.45 µm 60 = 0.6 µm 75 = 0.75 µm 90 = 0.9 µm 150 = 1.5 µm 300 = 3.0 µm 600 = 6.0 µm 1000 = 10 µm 2000 = 20 µm 1062 = Carbon 1064 = Carbon	KP = Pharmaceutical KC = Carbon	1 = Single 2 = Dual	A = 1/8" to 3/16" HB N = Luer Lock Female M = Luer Lock Male	A = 1/8" to 3/16" HB N = Luer Lock Female M = Luer Lock Male

*25DM Single Layer Capsule Example-0.6µm media grade with 1/8" to 3/16" hose barb fitting inlet and outlet would be: E25NA60KP1AA

*25DM Dual Layer Capsule Example-10µm over a 0.45µm media grade with 1/8" to 3/16" hose barb fitting inlet and outlet would be: E25NA1000/45KP1AA

Trademarks are property of their respective owners.

For more information, contact your **aspire** representative at **CLARCOR Industrial Air**:
 11501 Outlook Street, Suite 100 | Overland Park, KS 66211
 T: +1.800.821.2222 | T: +1.816.356.8400 | F: +1.816.353.1873
 Email: aspire@filtration.com

CLARCOR
 Industrial Air

©2015 BHA Altair, LLC. All rights reserved. **aspire** is a registered trademark of BHA Altair, LLC.
 ASPIRE066 (09/2015)